



# The Grange Primary School and Nursery NEWSLETTER

[www.thegrangeprimary.com](http://www.thegrangeprimary.com)

No. 33 Summer Term 2025

Friday 6<sup>th</sup> June 2025

## After School Clubs Next week

The following clubs will take place next week:

Monday - Playcourt Football and Sports  
Monday - Pop Choir  
Monday - Grange Community Garden  
Tuesday - Outdoor Multi Sports  
Tuesday - Table Top Games and Lego  
Thursday - Oracy

Please ensure that you collect your child at the front entrance to the school promptly at 4.15p.m.

## Quidditch Day - Tuesday 10<sup>th</sup> June

On Tuesday next week we will be holding our very popular Quidditch Day when children immerse themselves in a Hogwarts Sports Day. There is no charge for this event. Please ensure that your child has his/her P.E. kit in school on Tuesday.

## Change to school lunch arrangements today

Children were given a packed lunch today rather than a more normal school lunch. Sefton Catering Services were concerned that there may be a problem with the availability of clean water to the school today and that this might make it difficult to clean kitchen equipment properly. We have also experienced some difficulty with one of our cookers.

I am happy to tell you that there is no issue with the school's water supply and that the cooker is due to be repaired today!

## Class Five - Fire Champions!

It was a delight to welcome parents/carers etc. of children in Class Five to the culmination and celebration of the six-week project that the class have been involved in facilitated by Merseyside Violence Reduction Partnership (an organisation that includes the fire service and the police among many other local agencies).

Children have been given a host of important messages about how to stay safe and to help others including first aid, fire safety, water safety and dealing with many forms of anti-social behaviour. We have been very impressed with how the class have responded to the project.

## Children's University Graduation - Monday 16<sup>th</sup> June 2025

Parents and carers of children in Years Two and Six who have collected the requisite number of Children's University credits for clubs and activities that they have taken part in out of school hours, in the school holidays and at weekends have received a letter inviting them to Edge Hill University on Monday 16<sup>th</sup> June to attend. I do hope that all those invited will be able to attend this wonderful occasion.

## What's going on in the community?

Please see with this newsletter, details of activities and events taking place in our community.

*Please note: We are happy to share information that we receive about events going on for children and parents in the local community. This should not be viewed as an endorsement from the school.*

### Celebrating Good Attendance

Today's winner of the 100% Attendance Prize for the term to date (100% attendance and no late arrivals) is Amelia Fagan in Class Two and the Class Attendance Award for the week was won by Class Five - Well done Amelia and Class Five! Every child who attends school every day this term without being late once will receive a £10 prize on Friday 18<sup>th</sup> July.

*You can't teach an empty chair!*

### High School Transition Day - Thursday 26<sup>th</sup> June

Year Six children in Miss Wright's class who will be transitioning to local High Schools in September will spend the day at their new school on Thursday 26<sup>th</sup> June.

**Please note: IT IS THE RESPONSIBILITY OF PARENTS/CARERS TO TAKE THEIR CHILDREN TO THEIR NEW SCHOOL AND COLLECT THEM**

### Breakfast Club

I am delighted to announce that we have taken possession of more Breakfast Club resources for children attending to enjoy. These include some activities to encourage more active play under the canopy by the Nursery entrance. This new equipment will be used in Tuesdays and Thursdays.

You are reminded that Breakfast Club starts at 8.00 a.m. Children should not arrive in school before 8.00 a.m. as there are no staff on duty to supervise them. Breakfast is served up to 8.25 a.m. At 8.35 a.m. children make their way to class.

### Nursery Matters

**Would you like your child to attend our Nursery?** - Parents/carers of children who have their third birthday before 31<sup>st</sup> March 2026 may now apply for a Nursery place. Application forms are available from the main school office.

**Nursery Leavers' Graduation** - The Nursery Graduation on Wednesday 9<sup>th</sup> July is only for those children who will be leaving our Nursery at the end of this term.

**Nursery - end of term** - As always, Nursery term ends on the day before the final day for the rest of the school. This is to enable Nursery staff to hold an induction day for new Nursery starters. Nursery term end on Thursday 17<sup>th</sup> July.

### Parent Governor Vacancy

We currently have a vacancy for a Parent Governor on our Academies Governance Committee. If this is of interest to you, please make an appointment to meet with me to discuss the role.

### Class Photographs

Please make sure that children are looking their smartest on Wednesday next week for their class group photograph.

### Dates for your diary - Summer Term 2025

Tuesday 10 <sup>th</sup> June	Quidditch Day
Wednesday 11 <sup>th</sup> June	Class photographs
Thursday 26 <sup>th</sup> June	High School Transition Day
Thursday 3 <sup>rd</sup> July	Sports Day
Wednesday 9 <sup>th</sup> July	Nursery Leavers' Graduation
Tuesday 15 <sup>th</sup> July	Leavers' Performance
Thursday 17 <sup>th</sup> July	Leavers' Prom
	Term ends for children in Nursery
Friday 18 <sup>th</sup> July	Term ends at 1.30p.m.

With my very best wishes - Daniel Hains - Headteacher



# What's on in Sefton

Summer 2 Half Term 2025



**ADDvanced Solutions**  
Community Network  
Supporting you to find the answers



## ADDvanced Solutions Community Network

is an open access offer that supports the emotional health and wellbeing of neurodivergent children and young people, their families and the professionals that work with them. Below you will find the learning programmes and workshops for Sefton families. No diagnosis or referral is needed to access the offer.



**Learning Programmes**

page 3 & 4

[Find out more](#)



**Community Network Groups**

[See below](#)



**Online Learning Opportunities**

page 2

[Find out more](#)

## Sefton Community Network Group: Every Wednesday afternoon during term time

An informal, open access learning opportunity to seek advice and support around challenges at all stages of your journey. No need to book, just come along, to meet the team and visiting professionals.

**Time: 12:30pm – 2:30pm**

**Venue: May Logan Healthy Living Centre**

294 Knowsley Road, Bootle, L20 5DQ.

There is on-site parking available, the nearest train station is Bootle New Strand and bus links include the 47, 53Q, 52/52A, 58 and 300.

[Get directions](#)

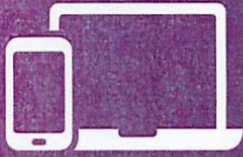


### Topics this half term:

Wednesday 4 <sup>th</sup> June	Introduction to Autism
Wednesday 11 <sup>th</sup> June	Understanding Echolalia
Wednesday 18 <sup>th</sup> June	Supporting Siblings
Wednesday 25 <sup>th</sup> June	in partnership with Signs of a Rainbow
Wednesday 2 <sup>nd</sup> July	Managing Stress
Wednesday 9 <sup>th</sup> July	Preparing for Summer Holidays



## Online Learning Opportunities



We offer several opportunities for parents and carers to access our offer online if this is your preference. Weekly Community Network Groups, termly workshops and also our Learning Programmes are delivered in a webinar format via Zoom for Healthcare.

Please register in advance to attend.

[View our online calendar here or via the QR code](#)



### ONLINE COMMUNITY NETWORK GROUP

#### Monday mornings

9.30am – 11.00am

[Click here to register](#)

Monday 2 <sup>nd</sup> June	<b>Signs of a Rainbow</b> joining us to share the support they can offer families.
Monday 9 <sup>th</sup> June	<b>Autism and Girls</b>
Monday 16 <sup>th</sup> June	<b>Supporting Transition</b>
Monday 23 <sup>rd</sup> June	<b>Tantrums vs Meltdowns</b>
Monday 30 <sup>th</sup> June	<b>Understanding Phobias</b>
Monday 7 <sup>th</sup> July	<b>Preparing for Summer Holidays</b>

### ONLINE COMMUNITY NETWORK GROUP

#### Wednesday evenings

5.00pm – 6.30pm

[Click here to register](#)

Wednesday 4 <sup>th</sup> June	<b>Supporting Transition</b>
Wednesday 11 <sup>th</sup> June	<b>Understanding and Supporting Behaviours that Challenge</b>
Wednesday 18 <sup>th</sup> June	<b>Neurodiversity and Mental Health</b>
Wednesday 25 <sup>th</sup> June	<b>Supporting Organisational Skills</b>
Wednesday 2 <sup>nd</sup> July	<b>Signs of a Rainbow</b> joining us to share the support they can offer families.
Wednesday 9 <sup>th</sup> July	<b>Preparing for Summer Holidays</b>

## Online 'Demand Avoidance' Workshop

An extended webinar workshop, exploring Autism with a Demand Avoidant Profile and strategies to support autistic children and young people presenting with varying degrees of demand avoidance.

**Friday 6<sup>th</sup> June – 9.30am – 12.00pm**

[Click here to register](#)



Online community network groups and learning workshops provide parents and carers with an understanding of a particular topic around neurodevelopmental conditions. We provide strategies to support children and young people at home and in school, with an opportunity to interact with our team via the chat and Q&A function. If you are using a phone, you will need to download the Zoom app beforehand.

Please be mindful of your data usage. If you do not have an unlimited data plan, you may need to connect to a Wi-Fi connection to prevent charges.





## Learning Programmes for Sefton parents and carers

We offer learning programmes in Sefton to support parents and carers to understand and meet the needs of their neurodivergent children and young people, pre, during and post diagnosis.

[View our online calendar here or via the QR code to find the latest available dates](#)



### Neurodevelopmental Conditions Learning Programme

This programme equips parents and carers with a greater understanding of neurodevelopmental conditions, specific learning difficulties and associated mental health needs and equips them with practical strategies that support the difficulties that may present, including:

- **Neurodevelopmental Conditions – including Autism, ADHD, Sensory Processing Difficulties, Specific Learning Difficulties.**
- **Managing everyday challenges and behaviours – including sleep, toileting and eating difficulties.**
- **Your Local Offer, disability welfare rights and SEND, Early Help and Education Health Care Plans.**

**No referral or diagnosis is needed**

[Click here for latest dates to attend face to face or online](#)

### Autism Learning Programme

This post-diagnostic Autism Learning Programme has been designed to support and empower parents and carers in their understanding of how autism is experienced by children and young people, providing learning, guidance and strategies to better support your child/young person. The programme is for Liverpool and Sefton parents/ carers whose children and young people have received a diagnosis of autism (ASD). This offer is in partnership with Alder Hey NHS Trust, commissioned by NHS Cheshire & Merseyside. Please select the appropriate programme specific to the age of your child/young person:

**3-8 years; 9-13 years or 14-19 years – Locations move each term.**

**Please contact us to book your free place**

Call our office on **0151 486 1788**, email us on **[info@advancedsolutions.co.uk](mailto:info@advancedsolutions.co.uk)** or register your interest below:



#### 3-8 YEARS

**in Sefton**  
across 3 Tuesdays  
9.30am – 2.30pm  
3<sup>rd</sup> June, 10<sup>th</sup> June and 17<sup>th</sup> June

[Register here](#)



#### 9-13 YEARS

**Online**  
across 6 Thursday evenings  
6pm – 8.30pm  
starting 5<sup>th</sup> June

[Register here](#)



#### 14-19 YEARS

**in Liverpool**  
across 3 Mondays  
9.30am – 2.30pm  
23<sup>rd</sup> June, 30<sup>th</sup> June and 7<sup>th</sup> July

[Register here](#)



## Professionals Neurodevelopmental Conditions Awareness Raising Training

**Tuesday 1<sup>st</sup> July – 9.15am – 4.00pm – Venue to be confirmed**

Designed to improve professionals' understanding of neurodevelopmental conditions (NDCs), how they may present and how one condition may overlap with another. Professionals attending this training will develop knowledge, skills and confidence to better support neurodiverse children, young people and their families:

- Understand the differences between and the typical behaviours of ADHD, Autism, and other NDCs
- Recognise the impact that unsupported and unmanaged NDCs can have on an individual and their family
- Understand the impact that sensory processing difficulties can have on children and young people
- Identify local support available for professionals, children, young people and their families.

If you are interested in this full day's training, please call the office on 0151 486 1788 or email [info@advancedsolutions.co.uk](mailto:info@advancedsolutions.co.uk)



We regularly update our website with new dates for professionals training and information about our offer for any professionals who work with neurodivergent children, young people and their families:

**Find out more** about our offer for professionals



### Seeking Crisis Support?

ADDvanced Solutions Community Network is not a crisis service. If you, a child or young person is experiencing acute distress and is deemed to be a risk to themselves or others, please see our [urgent support page](#).

The details we request when you register are kept securely and used in line with our privacy policy:

<https://www.addvancedsolutions.co.uk/wp-content/uploads/2025/04/Privacy-Policy.pdf>

[www.addvancedsolutions.co.uk](http://www.addvancedsolutions.co.uk) 0151 486 1788 [info@advancedsolutions.co.uk](mailto:info@advancedsolutions.co.uk)

Get in touch with us

